



Immediately following cord blood collection, choose a section of the umbilical cord that is:

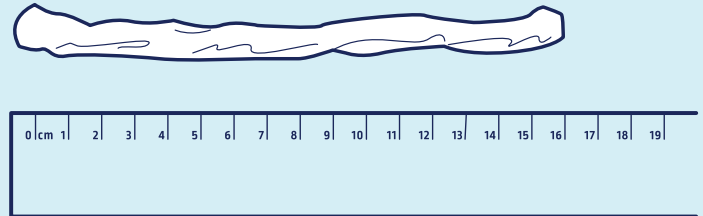
- Undamaged/unpunctured by the cord blood collection needle
- Untangled

01



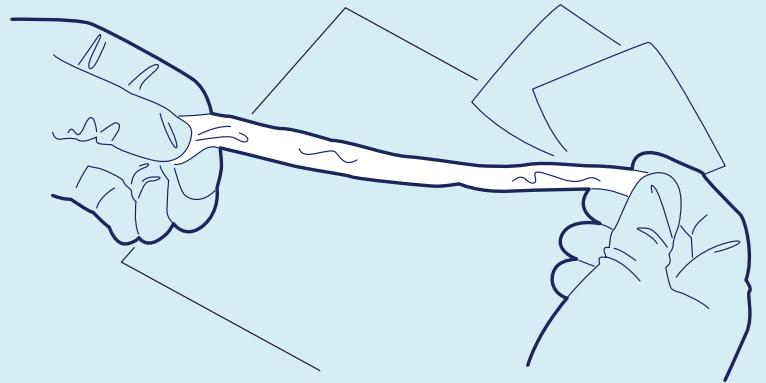
Using a pair of sterile scissors, cut a length of cord about 10 - 15cm long

02



Clean the cord with sterile gauze and chlorhexidine. Squeeze as much blood out of the cord as possible.

03



Place the cut, clean piece of umbilical cord into the tube provided. Immerse the cord into the liquid (phosphate buffered saline) provided. Close the lid tightly. Should the saline be spilled, sterile saline may be used to replace it.

04



Place the tube into the clear bag with the yellow label completed, then into the silver foil envelope along with the cord blood bag. Seal the silver foil envelope and place in the Collection Kit provided.